

NORTHFACE HOLDINGS PVT. LTD. have rich experience in Infrastructure Industry and impeccable track record of developing and constructing several high quality projects. The team at Northface Holdings Pvt. Ltd. is a blend of dynamic and energetic youth, who relentlessly strive hard to deliver the needs and to the satisfaction of our customers. At Northface Holdings Pvt. Ltd. we believe in "Principle of utmost good faith". With us, you are guaranteed of our quality work, and our promise to deliver THE BEST. The company is grateful to the satisfied customers who have encouraged us by referring new customers.

PREVIOUS AND ONGOING PROJECTS



NORTHFACE LAVAKUSA,
GUNTUPALLE, VIJAYAWADA



NORTHFACE GRANDEUR
GOLLAPUDI, VIJAYAWADA

**NORTH
FACE**

NORTH FACE
Heritage
Home, wonderful home

QR CODE FOR
WEBSITE



CORPORATE OFFICE NORTHFACE HOLDINGS PVT LTD

Plot No. 59, Kavuri Hills Phase - 2
Amar Society, Jubilee Hills
Hyderabad -500 033
www.northface.in

Call: +91 836 739 6789, 836 749 6789

ARCHITECTS



Akshaya Infra Consultants Pvt. Ltd.
Architects, Engineers & MEP Consultants

SITE ADDRESS NORTHFACE HERITAGE

Plot no # 3, Krishna River view,
Peddintamma Temple road,
Amaravathi - 522020.

Ph: 0866 2410320

eMail: sales@northface.in

Member



1-View (+91-9849635519)

Which gives **pleasure** to your stay



2BHK DELUXE APARTMENTS



2BHK Deluxe Apartments @ AMARAVATHI



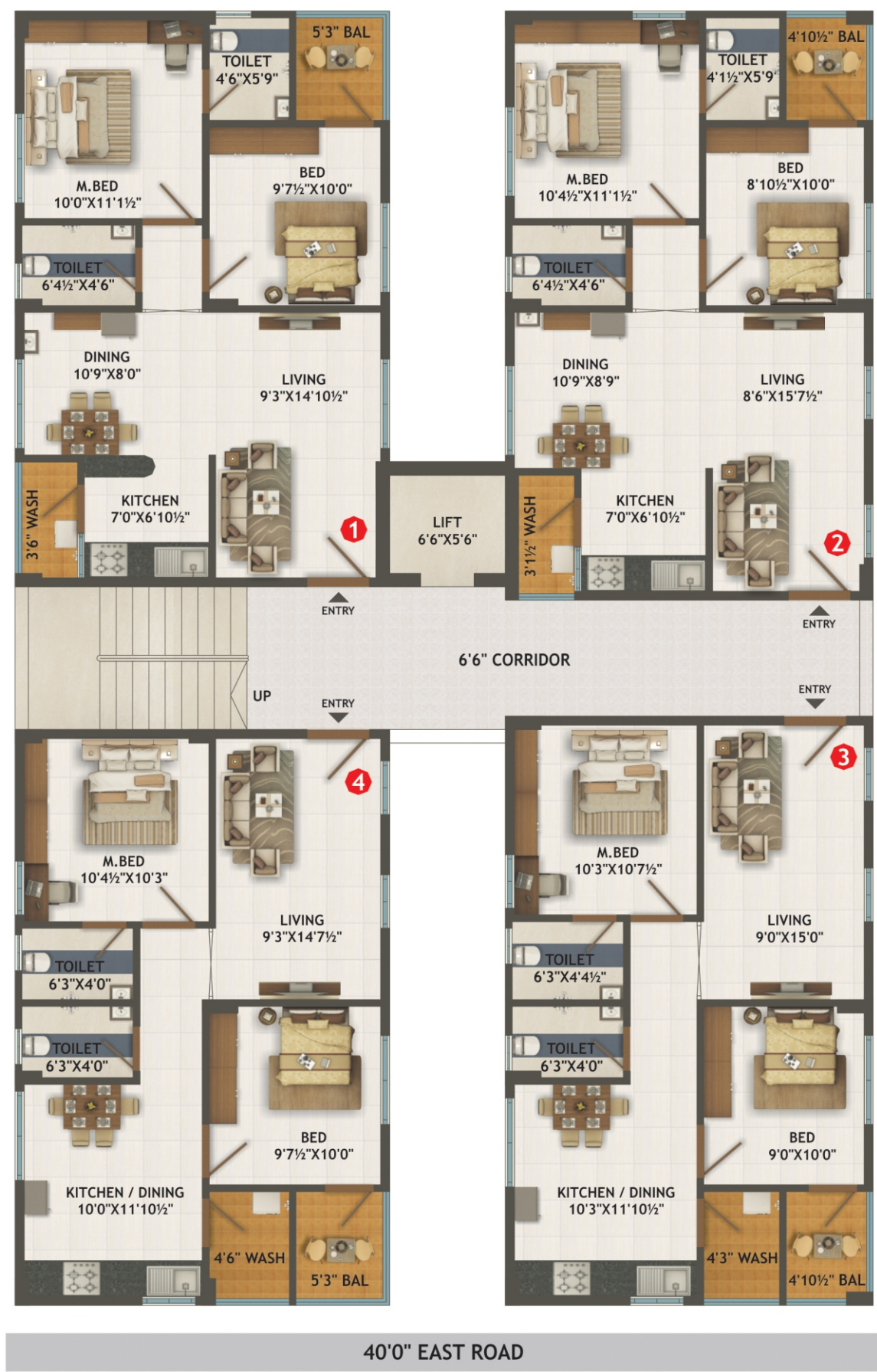
NORTH FACE
Heritage
Home, wonderful home

The better life is here.
Because that's how
we've created.

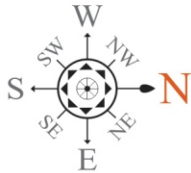


NORTHFACE HERITAGE is centrally located at Amaravathi in serene and green environment and easily accessible to all major towns, colleges, hospitals and other places. You will enjoy the comfort of driving in and driving out quite conveniently. The strategic location brings a spectacular and supreme value to customers investment.

TYPICAL FLOOR PLAN



FLAT NO.	TOTAL AREA
1	890 SFT
2	895 SFT
3	895 SFT
4	890 SFT



Enjoy smooth flow and Rhythm of Living...





NORTH FACE Heritage

Home, wonderful home



STRUCTURE

R.C.C. Framed structure with red brick masonry in cements mortar.



PLASTERING

External and Internal plastering in cement mortar with Makku (Internal only) finish.



WALLS

External with 6" internal, 4½" walls with quality bricks.



FLOORING

Flooring with 2/2 vitrified, Balconies & Staircase with ceramic tiles.



DOORS

Main door frames and shutter with Teak wood with polish and other doors frames are with Teak wood with flush shutters.



WINDOWS

Powder coated Aluminium or UPVC.



ELECTRICAL

Concealed copper wiring with adequate number of points.



PAINTING

Internal wall putty with plastic emulsion paint, external with exterior emulsion.

SPECIFICATIONS



SANITARY

Standard CP fitting with Indian / Western W.C.



KITCHEN

Granite platform with 2' feet height tiles dadoing.



TOILETS

Anti skid ceramic flooring and glazed tiles dadoing upto 7' height.



GENERATOR

Generator will be provided for common lights, lift, motors & 1KV for each flat.



WATER SUPPLY

24 hours water supply.



LIFT

Lift will be provided.



WARDROBES

Cement planks will be provided.



PLUMBING

Concealed CPVC pipes & fittings of standard quality.



PARKING

Car parking will be provided.

LOCATION PLAN (not to scale)



The elegant neighbourhood of Amaravati...

NORTHFACE HERITAGE, 2 and 3 BHK super luxury apartments are set to inspire all your senses. The project is centrally located near Amaravati with facilities like Schools, Colleges, Park, Banks, shopping complexes etc., You have easy access to Bus stop, Railway station within a few minutes drive. You are very near to major centers like Krishna river, River ghats, Mahachaitya, Amaravati museum and many other. Life becomes comfortable and convenient when one chooses to live in Northface Heritage.

- 100% Vaasthu
- Quality construction
- 24 Hours Water supply
- 24 Hours Security
- Easy access to major centers
- Pollution free green environment
- Excellent ventilation
- Individual flats
- Power backup generator



AMINITIES